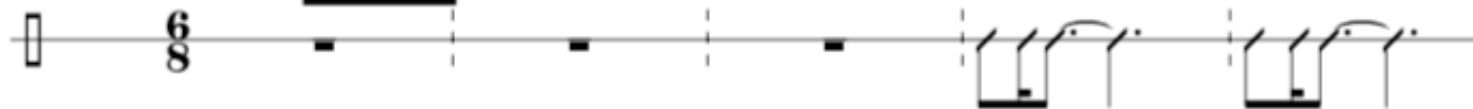


tsétsá'

Section 1



Leader



ngwá gáon mba-ǎju o

ke ngwá gáon mba ǎ ju'-o

Response



mbáá gwa gáon

2



wá gwa ma-ya ma'a lem o

shwoŋ pa- pe



mbáá gwa gáon

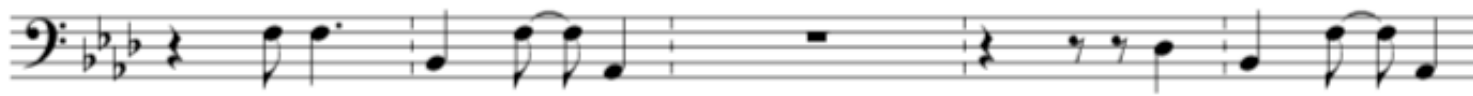
mbáá gwa gáon

3



pa- pǎ-bǎ

Tametsa' ya- loo



pǎ-bǎ mbáá gwa gáon

o mbáá gwa gáon

4



wá log pa ngýe ma'a lem o

njýo mejwoŋ ne ju' o



mbáá gwa gáon

5

Section 2

Musical notation for the top staff of measure 5, featuring a series of eighth notes with stems pointing up, grouped in pairs.

Musical notation for the bottom staff of measure 5, featuring a series of eighth notes with stems pointing down, grouped in pairs.

ngwa gwan mba o ju' ee gwa gwan lee ngwa gwan

mbwa gwa gwan

gwa gwan lee ngwa gwan

6

Musical notation for the top staff of measure 6, featuring a series of eighth notes with stems pointing down, grouped in pairs.

Musical notation for the bottom staff of measure 6, featuring a series of eighth notes with stems pointing down, grouped in pairs.

mba o ju' o mbwa gwa gwan ke ngwa gwan mba o ju' e gwa gwan lee

mba o ju' o mbwa gwa gwan

gwa gwan lee

7

Section 1

Musical notation for the top staff of measure 7, featuring a series of eighth notes with stems pointing down, grouped in pairs.

Musical notation for the bottom staff of measure 7, featuring a series of eighth notes with stems pointing down, grouped in pairs.

ke ngwa gwan mba o ju' o

ngwa gwan mba o ju' o mbwa gwa gwan

8

Musical notation for the top staff of measure 8, featuring a series of eighth notes with stems pointing down, grouped in pairs.

Musical notation for the bottom staff of measure 8, featuring a series of eighth notes with stems pointing down, grouped in pairs.

ke ngwa gwan mbwa ju' o o nna meshu

mbwa gwa gwan

mbwa gwa gwan

9

laa fɔ- gɔ mbwɔ' ndeŋ la mag soŋ soŋ o
fɔ- gɔ mbɔɔ gwa gɔɔn mag soŋ soŋ o mbɔɔ gwa gɔɔn

10

pi lua pa pa nɔɔn moo ma pa nyiŋ e gwaga ntsɔɔn
moo mbɔɔ gwa gɔɔn gwaga ntsɔɔn

11

Section 2

e lefaŋ a zsé nta- ŋa magum o ngwɔ gɔɔn
mbɔɔ gwa gɔɔn ŋa magum o mbɔɔ gwa gɔɔn

12

mba ɔ ju' ee gwa gɔɔn lee gwa gɔɔn mba ɔ ju' o mbɔɔ gwa gɔɔn
gwa gɔɔn lee gwa gɔɔn mba ɔ ju' o mbɔɔ gwa gɔɔn

13

ke ngwə gəon mba ɔ ju' e gwa gəon lee gwa gəon mba ɔ ju' o

gwa gəon lee gwa gəon mba ɔ ju' o

14

Section 1

wə gwa te-wonj shwonje lo sonj pa- pe

mbəw gwa gəon lo mbəw gwa gəon

15

pa- pen o wə gwa ma-ya ma'a lem o

pa- pen o mbəw gwa gəon ma'a lem o mbəw gwa gəon

16

Section 2

miŋ ma- ya ne- ju' o ngwə gəon mba ɔ ju' ee

ya ne- ju' o mbəw gwa gəon

17

gwa goon lee gwa goon mba ɔ ju' o mba ɔ gwa goon ke ngwa goon
 gwa goon lee gwa goon mba ɔ ju' o mba ɔ gwa goon

18

mba ɔ ju' e gwa goon lee gwa goon mba ɔ ju' o
 gwa goon lee gwa goon mba ɔ ju' o mba ɔ gwa goon

19

Mi- nute!